



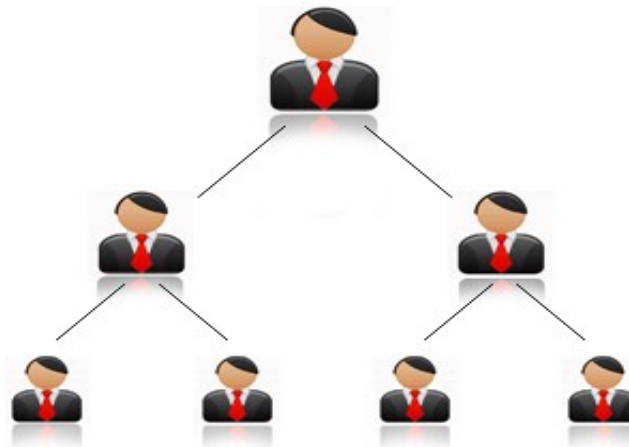
Infinite Open Source Solutions LLP

PDF-1055-0001 Binary MLM Plan
www.infiniteimsoftware.com

Copyright © All rights reserved 2013 - 2014 , Infinite Open Source Solutions LLP™

IOSS Guide To MLM Business Plans

1 Binary MLM Plan



The Binary Plan as the name suggests is based around the number 2, which represents the maximum number of frontline associates that any business centre can have. Any additional distributors must then be placed under one of your existing frontline members. This creates a very supportive environment for new members as the easiest way for associates to achieve success is by assisting their new members to build their organisations. This team approach makes the binary plan very attractive as there is a lot of support (both initial and ongoing) as all associates within your organisation work towards achieving a common goal.

In Binary Plan is actually a 2 x n matrix plan where n is the number of levels where commissions can be derived from. In most Binary compensation plans, the n is actually infinity. The distributors own what are called Income or Business Centers (BC). The famous Spill-Over Binary Plan also comes under the category of Binary Plan. Each Business Center can recruit only two direct sponsors. Although the compensation plan should always be considered when joining a network marketing company, we strongly recommend that you also consider the products and the practicality of the business model before making your final decision. Binary Plan is one of best MLM Plan which suits for any MLM Company.



Infinite Open Source Solutions LLP

PDF-1055-0001 Binary MLM Plan
www.infiniteimsoftware.com

Copyright © All rights reserved 2013 - 2014 , Infinite Open Source Solutions LLP™

There are normally no detailed restrictions to the binary structure and each level of your organization is paid out on a frequent quantity amount developing it obvious and obvious and easy to understand. One of the main variations of Binary Technique is that it is quantity inspired in contrast to level inspired. This also indicates there is an inspiration to help new affiliates in your organization.

In the fairness of good maths because there are no depth restrictions to the Binary Plan, each business centre has a limited earning potential which maxes out to ensure that both distributors and the company earn a profit.

If each organization middle has a limit to how much it can produce, how is it possible to produce huge sum of cash through a system marketing using the Binary Plan?

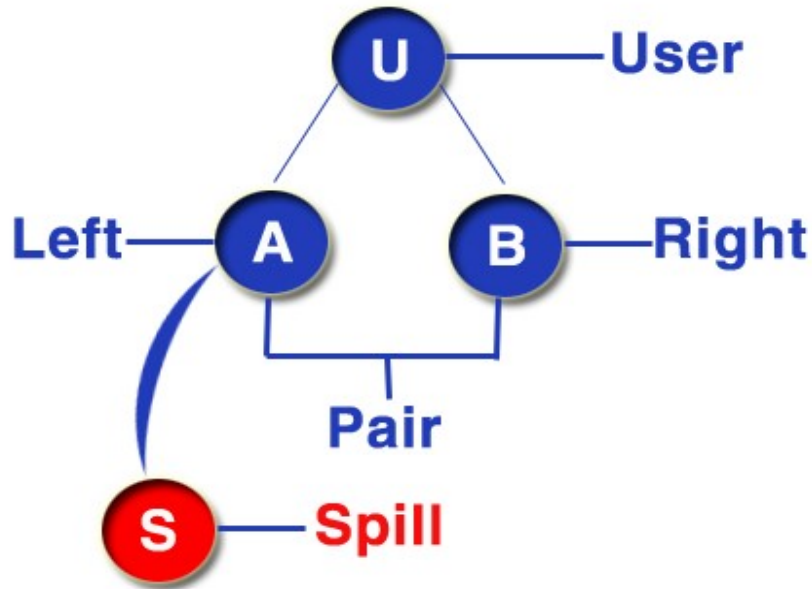
For your serious network marketers the profitable part of Binary Plan is that although each business centre can only earn so much, there is generally no limit as to how many business centres each distributor can operate. Think of a business centre like a shop, if you currently own a shop that is doing really well but no longer has the potential to grow, what do you do? Open a second shop, as this now allows you to earn profits on both businesses. Well it is exactly the same with the Binary Plan. Once you have achieve a certain level with your network marketing business where your organisation has maxed out or has limited potential to earn you more money, the company rewards the distributor with a new business centre.

The company is happy because they have an experienced, successful distributor opening another business center and the distributor is happy because now they have a higher earning potential. The more business centres the distributor has the greater the earning potential of the distributor.

Binary Spillover MLM Plan

The word spillover means an act of flowing over or spilling over. The Spill-Over Binary Plan also comes under the category of Binary Plan. Network marketing compensation plans have the possibilities for spillover like the binary plan and Forced Matrix Plan. By knowing more about MLM spillover, we come across the term binary plan. MLM spill over is similar to a Binary Plan. When we join in MLM, an organization have to be made.

This should be under our upline or sponsor. An organization is divided into two. There should be a left side and the right side for the business group. For each side, we have a person in the first stage. When the positions becomes complete we can continue to recruit new downline members.



The MLM spillover is related to the mlm lead generation and downline recruitment. MLM spillover consists of the fact that a person in the upline decides to place a recruited person in downline. Profit grows as the down line person performs the operations. Spillover means a person spills over to the person in downline. When we choose to place our new downline under a person in our team it would be an effective downline retention move that we can use. The person in our team where the recruit has placed will be supportive, motivated and becomes active in our group. Spillover normally comes into play when the compensation plan in use is restricted by the width of the levels.

By just sitting and without doing anything profit will not come for MLM spillover. If we are not active, new recruits will be placed in the group of someone else. MLM Software supports the spill over plan to work smoothly. We can make sure that, in the upline new recruits comes under an active distributor who has motivation and downline retention skills to make the business grow and earn good income.

Pros Of Binary MLM Plan

Although the Binary Compensation set up isn't the most moneymaking plan, rather like all different compensation structures this model will supply the potential to earn a very high financial gain if you're willing work hard. With the confirmatory teamwork, this compensation plan ensure your success.



Infinite Open Source Solutions LLP

PDF-1055-0001 Binary MLM Plan
www.infinitemlmsoftware.com

Copyright © All rights reserved 2013 - 2014 , Infinite Open Source Solutions LLP ™

Cons Of Binary MLM Plan

When we conclude, we can say that Binary MLM Plan is generally a good compensation plan, though before choosing a organization we suggest that you should consider their products, the functionality of the their business framework and whether the organization has a good track record.

Binary MLM Software

Infinite MLM Software supports to setup your own Binary Plan with two simple steps. This software is complete online solution for managing your MLM Business with a simple Binary Plan Calculation. The admin control panel makes easy for administrating your network using simple user interface so that any one can operate easily.

* In **step one**, enter your personal detail and select your plan as binary from.

* In the **step two**, enter the following Binary MLM plan details.

First pair: 1:1 or 2:1

This is the first pair either 1:1 or 2:1 If the plan is 1:1, the first pair calculated based on one user in left and one user in right ,the following pair is same as 1:1

If the plan is 2:1 or 1:2, the first pair calculated based on either two user in left and one user in right or vice versa. The following pair is same as 1:1

[Click here](#) to try FREE Demo of our Binary MLM Software NOW