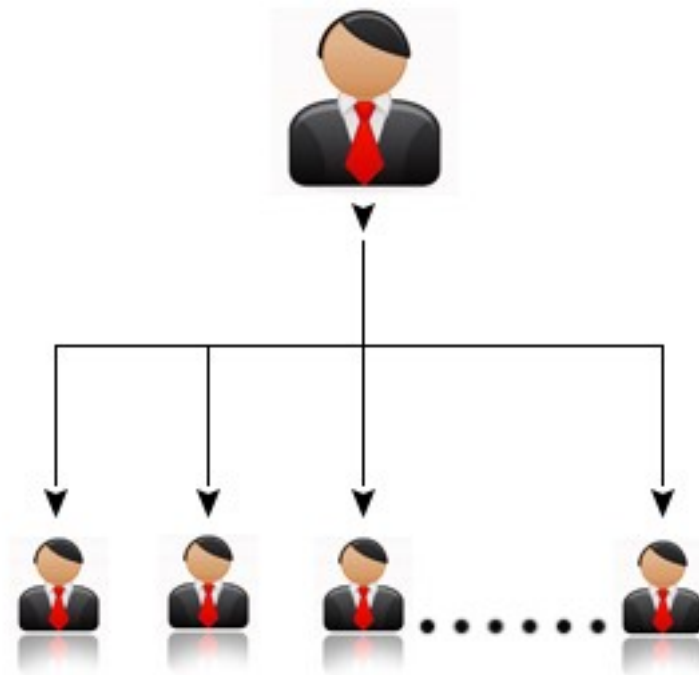


IOSS Guide To MLM Business Plans

#13 Unilevel MLM Software



Before getting into Unilevel MLM Software, Let us discuss what is Unilevel compensation plan (or) Unilevel MLM Plan. Unilevel MLM Plan allows you to sponsor only one line of distributors, so everyone you sponsor is on your forehead. There are no limitations in width of the Plan and fees are normally paid on a limited depth. In this plan, each member can add as many members in his downline. As there is no limitations to this plan, you can build a stronger and lengthy down chain.



Infinite Open Source Solutions LLP

PDF-1055-0013 Unilevel MLM Plan
www.infinitemlmsoftware.com

Copyright @ allright reserved 2013 - 2014 , Infinite Open Source Solutions LLP TM

Regular compensation plans pay anywhere between 5 and 7 levels deep. The objective of this compensation plan is to recruit many members of the team first and then line them even. Unilevel Plan is considered in such way that it is easy to understand for anyone. Here in this plan, to earn commission there is a minimal amount of member volume required. Hence this plan really works smooth for part-timers.

According to Uni-Level compensation plan, one person controls the entire down chain members, here the first person will get the dividend of each other down chain member respectively. In addition, modern Unilevel plans also give away with bonuses which makes this plan more attractive. While comparing to other MLM Plans, Uni-Level Plan is much easier to understand, so that it is an easy Plan to explain. The training time for this plan will be very less while comparing to other plans. Most of the modern companies use Uni-Level Plan as the basic plan and customize it to another plan. While considering any kind of MLM Organization, Uni-Level plan is technically the good plan to deal with. Uni-Level plan will undoubtedly score 5 out of 5 stars for any startup MLM company.